

Understanding The Inaccuracies

Rev 5

(Note: By accessing this document, you agree to the Terms of Use.)

AAR Overall Timeline Map



The Beaver County (BeC) ESU After-Action Report (AAR) timeline and especially the timeline maps have many inaccuracies. Before using it for investigative purposes, those inaccuracies need to be understood. This analysis will point out those inaccuracies, and correct them, to help paint an accurate picture of what happened at the American Glass Research (AGR) complex on July 13, 2024.



When reviewing the AAR inaccuracies, consider how Sen. Grassley’s website containing that document introduces it. It was “a **flash summary**,” and therefore should be analyzed and interpreted accordingly before relying on it for investigative purposes.

Post-shooting: Beaver County ESU compiles an after-action report containing a flash summary of the day’s events, including references to a Beaver County ESU counter sniper’s observation of Crooks at 5:10 p.m. near the AGR building and the counter sniper's photo documentation of the suspect at 5:14 p.m. [\(report\)](#).

Disclaimers & Terms of Use

Disclaimers:

The following content does not reflect the opinions of Peak Prosperity, Peak Prosperity contributors, or other content providers referenced herein, but are rather the sole opinions of the author. The content is provided for educational and investigation purposes only. No blame or fault is intended or implied regarding any persons named or referenced herein.

Links to Third Party Sites:

This document contains links to websites and social media sites ("Linked Sites"). The Linked Sites are not under the control of VegasPatriot and VegasPatriot is not responsible for the contents of any Linked Site, including without limitation any link contained in a Linked Site, or any changes or updates to a Linked Site. VegasPatriot is providing these links to you only as a convenience, and the inclusion of any link does not imply endorsement by VegasPatriot of the site or any association with its operators.

Fair Use Notice:

This document may contain copyrighted material the use of which has not always been specifically authorized by the copyright owner. It is being made available in an effort to advance the understanding of environmental, political, human rights, economic, democratic, scientific, and social justice issues, etc. It is believed that this constitutes a 'fair use' of any such copyrighted material as provided for in Section 107 of the US Copyright Law. In accordance with Title 17 U.S.C. Section 107, the material in this document is distributed without profit to those who have expressed a prior interest in receiving the included information for research and educational purposes. If you wish to use copyrighted material from this site for purposes of your own that go beyond 'fair use', you must obtain permission from the copyright owner.

Disclaimers & Terms of Use

No Unlawful or Prohibited Use/Intellectual Property:

You are granted a non-exclusive, non-transferable, revocable license to access and use this Document strictly in accordance with these “Terms of Use.” As a condition of your use of the Document, you warrant to VegasPatriot that you will not use the Document for any purpose other than what constitutes a 'fair use' of any copyrighted material as provided for in Section 107 of the US Copyright Law, and will not use it for any purpose that is profitable, unlawful, or prohibited by the “Terms of Use.” You may not use the Document in any manner which could interfere with any other party's use and enjoyment of the Document.

All content included as part of the Document, such as text, graphics, logos, images, as well as the components and compilation thereof, is the property of VegasPatriot or the referenced content providers, and protected by copyright and other laws that protect intellectual property and proprietary rights. You agree to observe and abide by all copyright and proprietary rights, and associated laws.

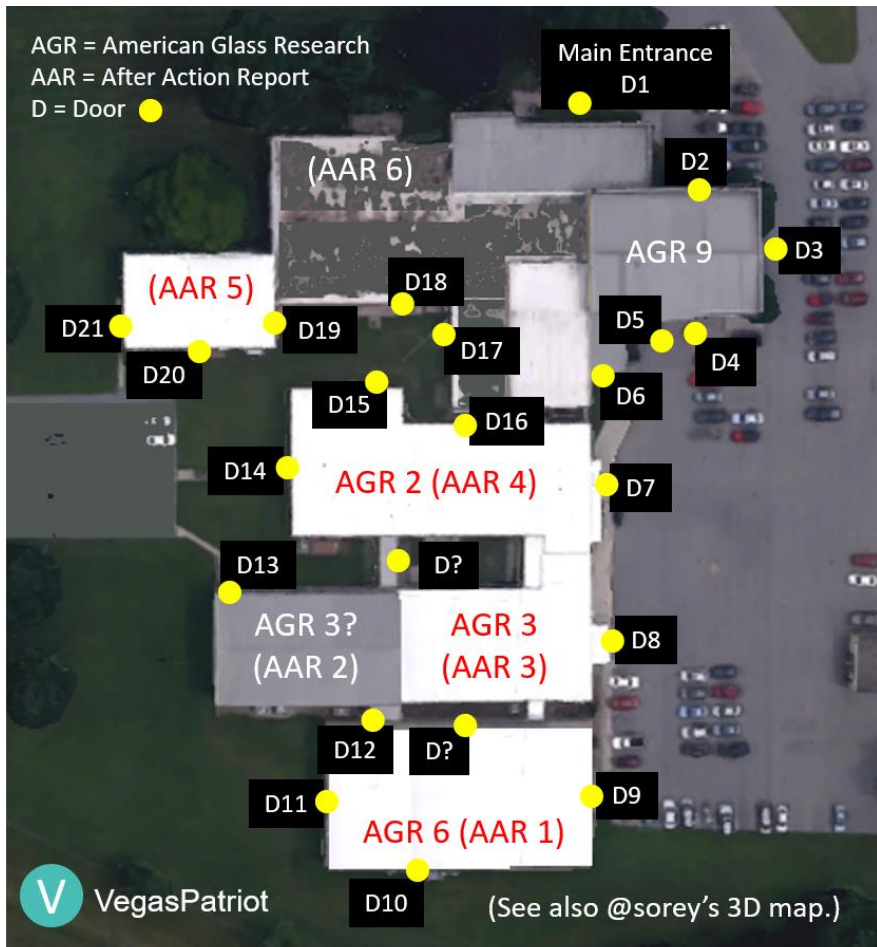
You will not modify, publish, transmit, participate in the transfer or sale, create derivative works, or in any way exploit any of the content, in whole or in part, found in the Document. VegasPatriot content is not for resale. Your use of the Document does not entitle you to make any unauthorized use of any protected content, and in particular you will not delete or alter any copyright, proprietary rights, or attribution notices in any content. Whole slides only may be reproduced, not partial slides or images. You will use protected content solely for your personal informational, educational, and investigational use, and will make no other use of the content without the express written permission of the copyright owner. You agree that you do not acquire any ownership rights in any protected content. VegasPatriot does not grant you any licenses, express or implied, to the intellectual property of VegasPatriot or any of the referenced contributors except as expressly authorized by these “Terms of Use.” VegasPatriot reserves the right to modify these “Terms of Use” at any time without advanced notice.

To request authorization for any use of the Document beyond those authorized by these “Terms of Use, contact VegasPatriot in a post on Peak Prosperity by including “@vegaspatriot” in the post.

Introduction

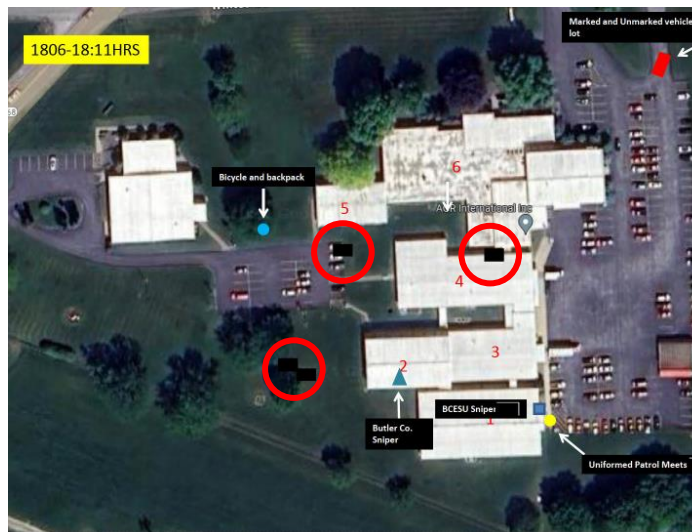
The AAR Buildings & Door Map provides the building numbers assigned by AGR when those numbers are known, as well as in the AAR. Door numbers are those assigned by AGR as shown in rally videos and Google Maps street view.

Buildings & Doors Map



The AAR was initially release by Sen. Grassley in a redacted version. The redactions were readily apparent in the textual timeline, but did you know that the timeline maps also had redactions? An unredacted version was later provided by BeC Det. Bonnie Sedlacek to Jason Goodman. The redacted areas in the unredacted versions show that whatever may have been redacted was removed. This analysis will make inferences about what was likely intended to be depicted in those redacted locations.

Redacted



Unredacted



The 17:10 Timeline Entry & Map

The 17:10 timeline entry was the first sighting of the patsy by Sgt. Nicol. The patsy was walking by a window. The corresponding 17:10 map shows where the patsy was photographed sitting on the retaining wall, which occurred at 17:14, and was NOT the first sighting.



AAR Timeline Entry

- 17:10 – First Observed Suspect by Nicol – Walked by window
- 17:14 – Picture of Suspect (time taken)

Based on new testimony provided in the Congressional Task Force Interim Staff Report (TF-ISR), the location has been verified to be outside of the west window.

(Note: See my “Sidebar Analysis – Counter Snipers” for verification of window locations.)



The 17:10 Timeline Entry & Map

In the redacted 18:06-18:11 timeline map we can see two redactions located at the tree seen from the AAR 2 west window, as shown the counter sniper nest photograph. It's highly likely that one of those were meant to depict the patsy's 17:10 sighting.



ABC Interview

WI – “Then, as the former president began speaking, Nicole noticed rallygoers looking away from the podium, up toward the roof of the AGR building. Some were shouting that there was someone up there.”

(Source: [ABC](#))

18:10:03 – “He’s on the roof” ([AP - D.J. Laughery](#))



It is possible that the second redaction near the tree was meant to depict the crowd Nicol reported seeing looking up at the room and saying someone was up there.

That was not included in the AAR for whatever reason, along with other portions of Nicol’s testimonies.



The 17:10 Timeline Entry & Map

Radio Communications (RC) & Witness Interviews (WI)

WI - "He was looking up and down the building ... It just seemed out of place,' Nicol, assistant leader of the Beaver County SWAT team, told ABC News ." (Source: [ABC](#))



AAR Timeline Entry

- 17:10 – First Observed Suspect by Nicol – Walked by window
- 17:14 – Picture of Suspect (time taken)
- 17:28 – Picture of Bike (time taken)

Congressional Task Force Report

"Finally, Beaver ESU Witness 3 stated that he first saw Crooks slightly after 1700. Beaver ESU Witness 3 testified:

So I was kind of moving around the building a little bit on binocular glass and doing the observation, and I had moved from the room that I was in into the hallway and was standing where [Beaver ESU Witness 1] [Woods] was positioned prior [to his departure from the site at 1619]. As I was just looking out at the crowd, I noticed an individual that was walking pretty close to the building, kind of looking up and down the building, and just thought it was odd.⁷²" ([TF-ISR](#) Pg. 29)



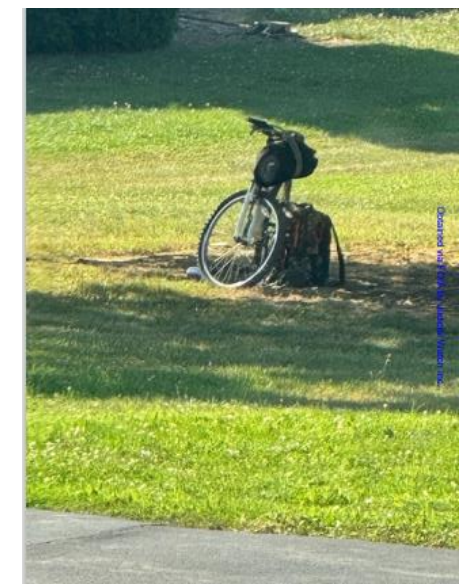
The 17:32 Timeline Entry & Map

The next timeline map is timestamped 17:32, but it shows the 17:14 and 17:28 photograph timeline entries. Also note that Sgt. Nicol could not photograph the bike from the south window. In order to provide an accurate map for those entries, new and separate maps are needed.



AAR Timeline Entry

- 17:14 – Picture of Suspect (time taken)
- 17:28 – Picture of Bike (time taken)
- 17:32 – Suspect spotted looking at phone, news feeds, and range finder confirmed through monoculars



The 17:14 Timeline Entry & Map

Radio Communications (RC) & Witness Interviews (WI)

WI - “Something about the kid and his presence there didn’t seem right, Nicol thought. He couldn’t articulate exactly what that was, he said, but whatever he was feeling prompted him to take the young man’s picture at 5:14 p.m.” (Source: [CNN](#))



AAR Timeline Entry

- 17:14 – Picture of Suspect (time taken)

Congressional Task Force Report

“Soon thereafter, Beaver ESU Witness 3 saw Crooks again and took two photographs of him. Beaver ESU Witness 3 (ESU 3, below) testified about the sequence of events:.

ESU 3: And as I brought my binoculars down, I just happened to look down and I was like, ‘There he is.’ He was sitting directly below me.

TF STAFF: This is from the southwestern corner of that second building?

ESU 3: Yes. And there is, like, a little wall that's about two and a half, three feet high, and he was just sitting on it. I'm like, ‘Well, there he is.’ So I don't know why. Maybe the opportunity and because he was so close. I'm like, I got my phone. I just pulled out the picture. The first one is the one of his back. That was the first picture that I took. And then the second picture is the one -- because I took the first one. I'm like, ‘Come on, man. Turn your head. Turn your head.’ And then, finally, he turned, and then I took that second one, which was the side view.⁷³” ([TF-ISR](#) Pg. 30)



The 17:28 Timeline Entry & Map



Note: Nicol took the photo at 17:28, it wasn't until 17:45, 17 minutes later, that he texted it to BuC ESU Command with the photos of the patsy on the retaining wall.



AAR Timeline Entry

- 17:28 – Picture of Bike (time taken)

Congressional Task Force Report

“Beaver ESU Witness 3 [Nicol] subsequently went to look for Crooks, moving around the AGR second floor. Beaver ESU Witness 3 observed a bicycle and a backpack that seemed suspicious, although the FBI subsequently confirmed those items did not belong to Crooks.⁷⁹ Beaver ESU Witness 3 stated that he photographed the bicycle and backpack at approximately 1725. He testified:

So I went over there and was still looking around for this individual, and I had noticed over across the property there was a bike sitting there with a backpack and it was underneath the tree. And just from moving around earlier in the day, I didn't remember seeing that. So after seeing him and then after seeing that, it was like, eh. I thought it was kind of strange, so I took a picture of.⁸⁰ (TF-ISR Pg. 32)



The 17:32 Timeline Entry & Map

The 17:32 map does not show where the patsy was when Sgt. Nicol sighted him using his phone and rangefinder. None of the maps show that. In my “Sidebar Analysis – The Rangefinder,” I analyzed the possible locations, and inferred the location shown in the bottom right.



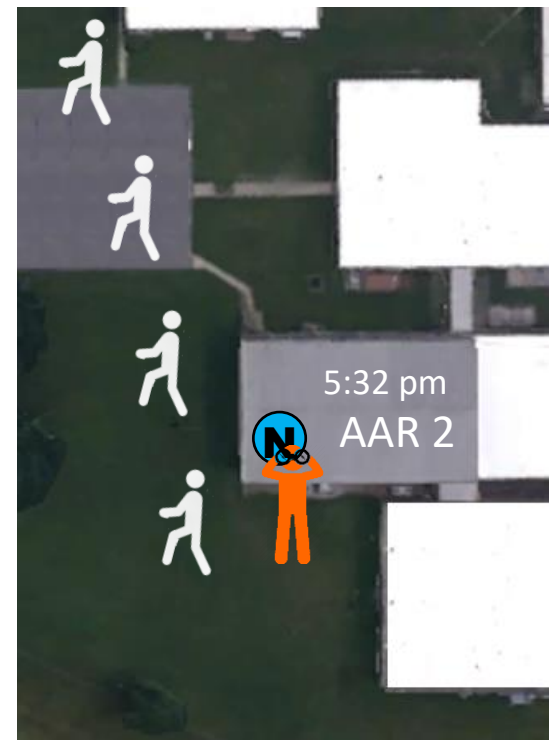
AAR Timeline Entry

- 17:32 – Suspect spotted looking at phone, news feeds, and range finder confirmed through monoculars

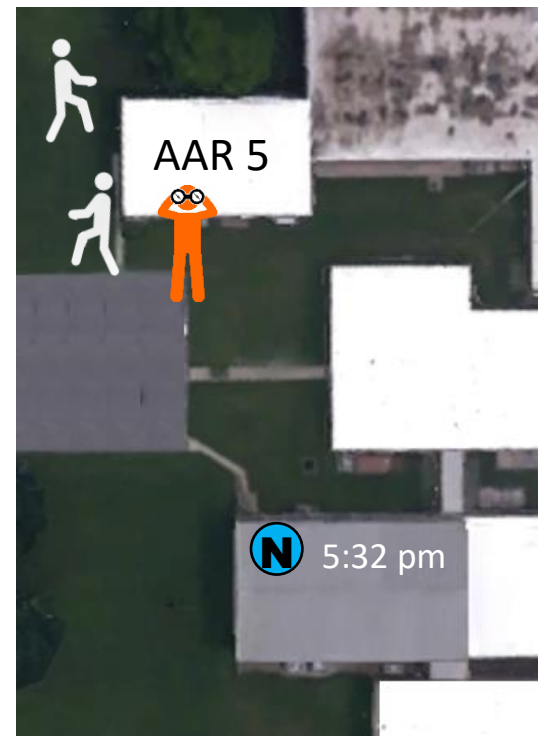


The first option was initially discounted due to Nicol stating that he lost sight of the patsy, and he could have seen him leaving AGR in that scenario.

Discounted Location



Inferred Location



The 17:32 Timeline Entry & Map

WI – “At 5:32 p.m., Nicol again looked down from a second-story window and saw the same kid. This is when he zoomed in with his binoculars and noticed the range finder. Instantly, his assessment of the young man was elevated from simply odd to potential threat. (Source: [CNN](#))

WI – “Nicol noticed an unattended bike and backpack. And he saw the man looking up and around, then pulling a rangefinder from his pocket. There was no apparent reason to have a distance-gauging device at a political rally featuring the man who, in a few days, would accept his party's presidential nomination. The sharpshooter snapped pictures of the suspicious-looking man and the bike, then flagged it to fellow snipers from his team assigned to the event and called it into the command group.” (Source: [ABC](#))

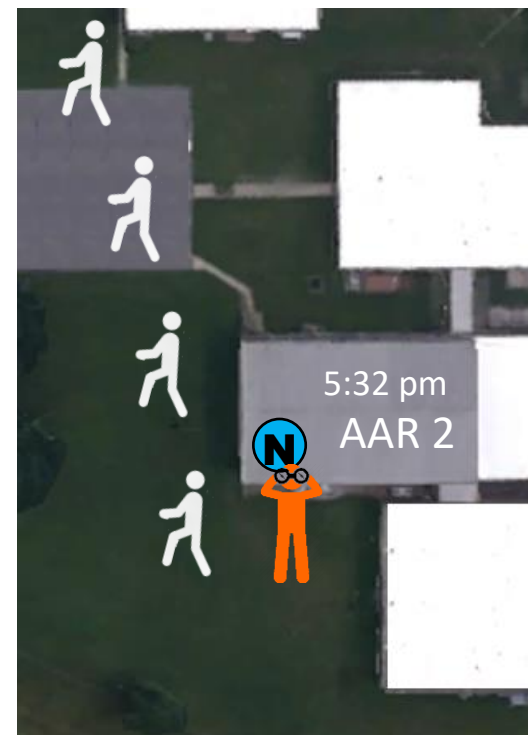
WI – “Sniper Greg Nicol said he also spotted Crooks, snapped photos of him and noticed him pull something out of his pocket. ‘Ended up being a range finder. At first, I was like, ‘Nah, that can’t be a range finder.’ I thought maybe it was a monocular, and I had my binoculars, so I zoomed in, and I was like, ‘That’s a range finder,’ Nicol said.” (Source: [WTAE4](#))

Neither of the articles above directly state which window Nicol was at when he spotted the patsy with the rangefinder, but ABC groups it with the bike sighting from the north facing window. The WTAE4 (an ABC affiliate) article about the same interview, suggests it was the same window he photographed the patsy from, an apparent contradiction.

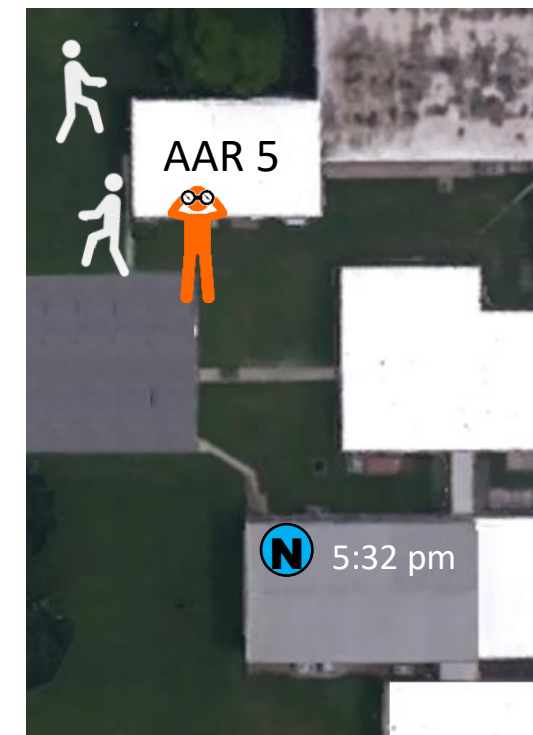
AAR Timeline Entry

- 17:32 – Suspect spotted looking at phone, news feeds, and range finder confirmed through monoculars

Discounted Location



Inferred Location



The 17:32 Timeline Entry & Map

In the redacted 18:06-18:11 timeline map we can see a redaction visible from the north facing window. Since the rangefinder sighting was not depicted on any of the maps, this redacted location may have been intended to show that sighting location.

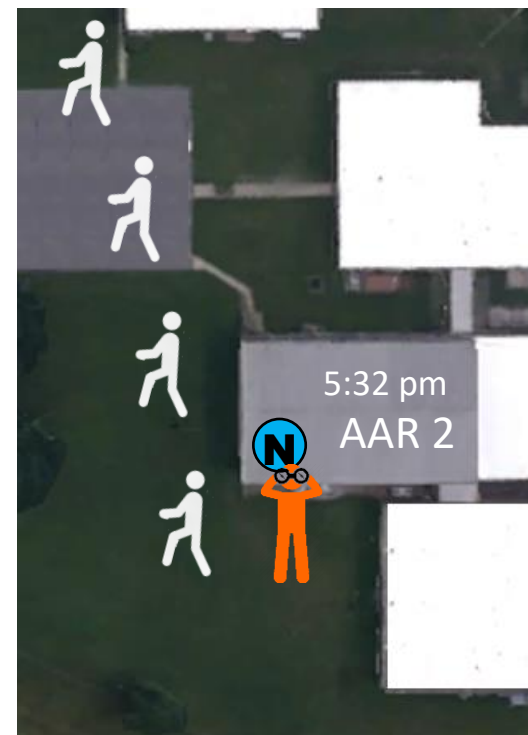


AAR Timeline Entry

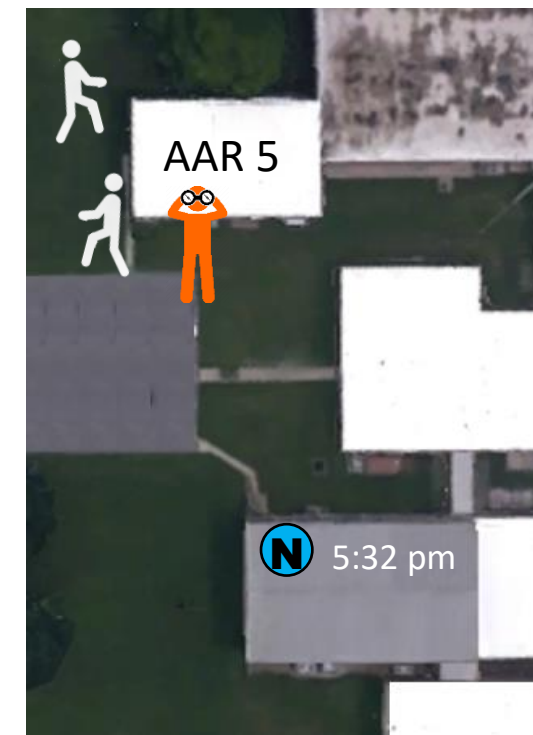
- 17:32 – Suspect spotted looking at phone, news feeds, and range finder confirmed through monoculars



Discounted Location



Inferred Location



The 17:32 Timeline Entry & Map

The next segment of the Task Force’s report that cover’s Nicol’s testimony is provided below. The report skips over the actual sighting of the rangefinder, so does not offer further insight as to where the patsy was when Nicol saw him using it.



For now, I will keep my initial inferred location as it was, while making allowance for the alternative location should the transcripts from Nicol’s Task Force interview be released in their entirety.

(Note: See also my “Sidebar Analysis – The Rangefinder.”)

Kid learning around building we are in. AGR I believe it is. I did see him with a range finder looking towards stage. FYI. If you wanna notify SS snipers to look out. I lost sight of him. Also a bike with backpack sitting next to it in rear of building that was not seen earlier.

5:38 PM

Congressional Task Force Report

“At 1738, Beaver ESU Witness 3 sent a text message along with the photographs of Crooks to a group of local snipers. The message stated: “Kid learning [sic] around building we are in. AGR I believe it is. I did see him with a rangefinder looking towards stage. FYI. If you wanna notify SS snipers to look out. I lost sight of him. Also a bike with a backpack sitting next to it in rear of building that was not seen earlier.” Beaver ESU Witness 3 testified that he meant to type “lurking” instead of “learning.”⁸³ (TF-ISR Pg. 34)

AAR Timeline Entry

- 17:32 – Suspect spotted looking at phone, news feeds, and range finder confirmed through monoculars



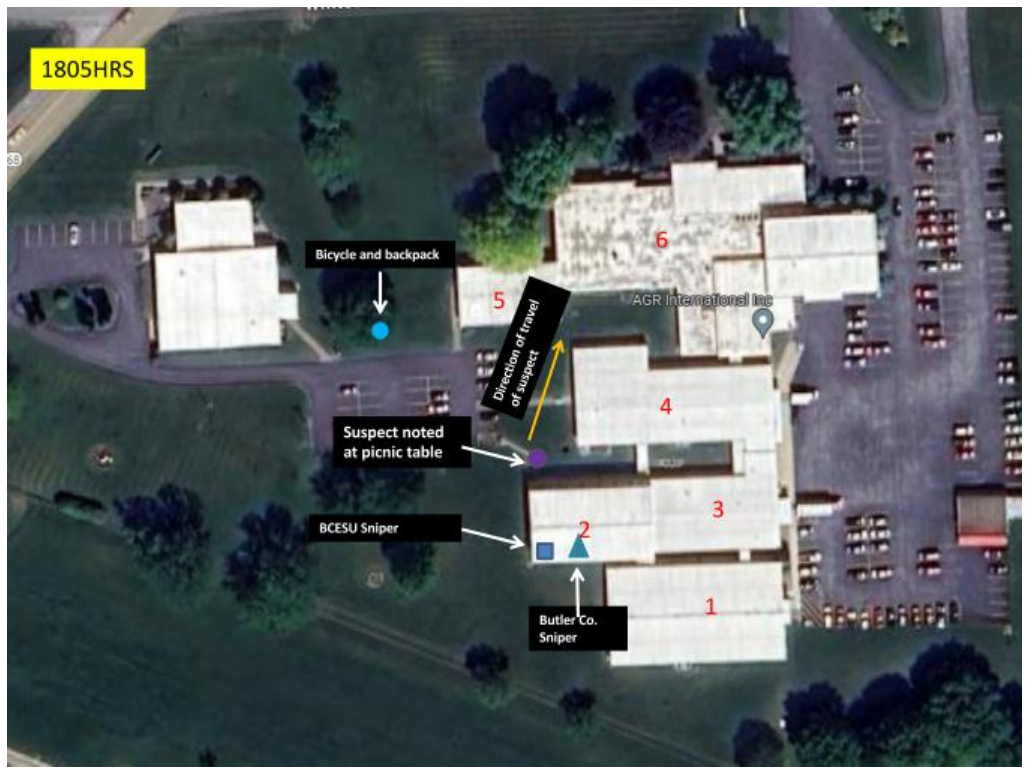
The 18:05 Timeline Entry & Map

The 18:05 map shows Sgt. Nicol in the wrong room for seeing the patsy near the Door 14 picnic table. The map's associated entry states that the time is "Approx." The corresponding radio transcript was logged at 6:02 pm, so both of those timestamps warrant correction.



AAR Timeline Entry

- 18:05 – Approx suspect at picnic tables and moving direction of Sheetz, he has a back pack (communicated by Nicol) via radio
- Bulter (sic) Sniper stayed in place at original position



Washington Post Radio Transcripts

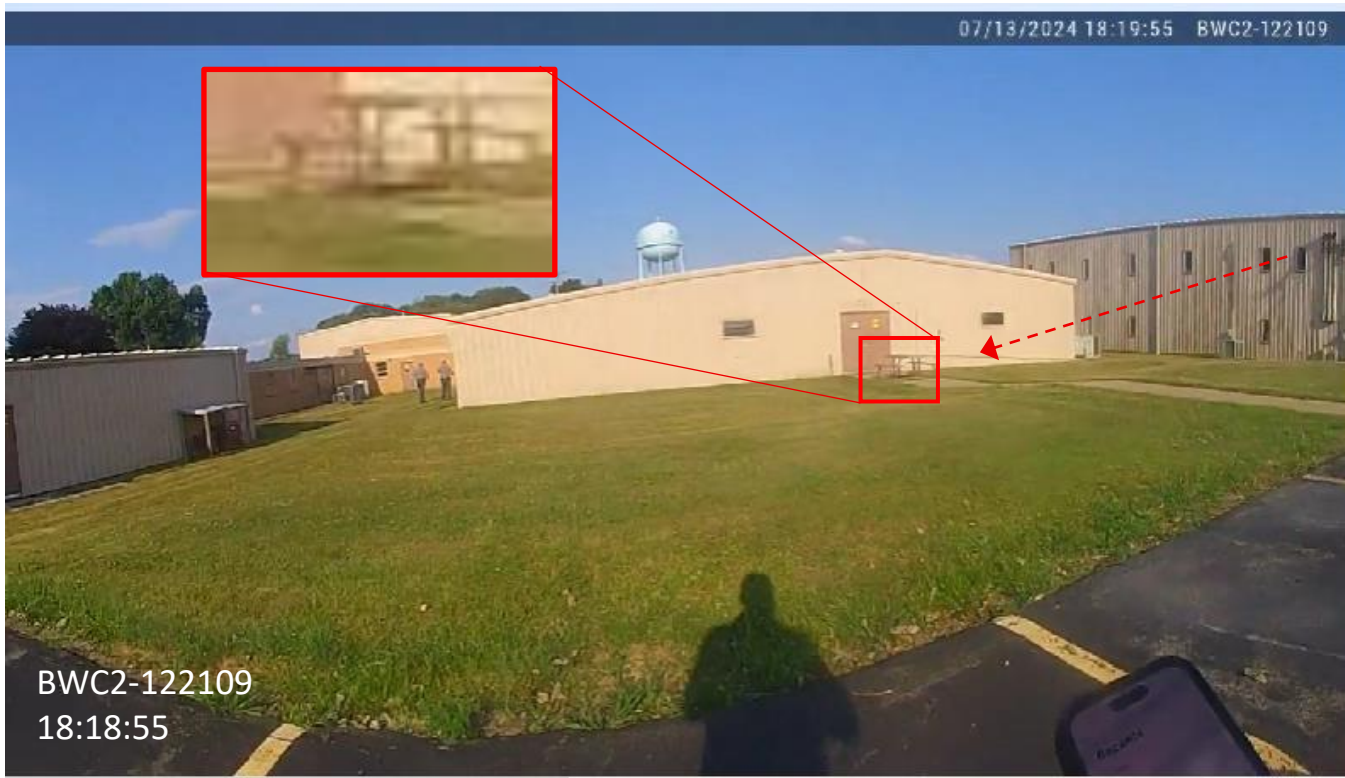
“At 6:02 p.m., the same local sniper who first radioed in the message about the range finder was on the second floor of the building owned by Agr International. From a northwest window, facing away from the rally site he glimpsed the suspect again just as Trump was preparing to take the podium” ([WP](#))

Sgt. Lenz’s Transcribed Radio Log (Ken Silva @HeadlineUSA)

18:02:34	255	PD Ops 4	60701	Nicol	4Sierra2 command
18:02:40	256	PD Ops 4	100501	Lenz	4Sierra2 go ahead
18:02:43	257	PD Ops 4	60701	Nicol	Alright subject is in between the AGR buildings he has a backpack now he just went towards sheetz
18:02:52	258	PD Ops 4	100501	Lenz	Copy, has a backpack now between the buildings heading towards sheetz

The 18:05 Timeline Entry & Map

The picnic table referenced and the window Nicol spotted the patsy through can be seen in Sgt. Vensel's bodycam, below, the day of the shooting.



AAR Timeline Entry

- **18:02** – Approx suspect at picnic tables and moving direction of Sheetz, he has a back pack (communicated by Nicol) via radio
- Bulter (sic) Sniper stayed in place at original position



The 18:06-18:11(12) Timeline Entry & Map

The 18:06-18:11 map’s timestamp suggests a period of time, but the unredacted map shows a point in time. The corresponding 18:06-18:12 timeline entry has its own errors, and has been perhaps the largest stumbling block for many in interpreting the AAR, including myself.

AAR Timeline Entry

- 18:06-18:12:
 - Nicol goes downstairs of building 1 to meet patrol to let them know suspect is around building on side of fairgrounds
 - 1 Marked vehicle and unmarked vehicle pull in together



If the 18:05 time was corrected by subtracting 3 minutes, the subsequent timeline entry should rightfully be corrected by subtracting 3 minutes from the start time of that entry, resulting in **18:03 – 18:12**, which loosely captures the Door 13 and Door 9 events.

Since the associated timeline map states 18:06-18:11 HRS, which makes more sense since the entry is sandwiched between the 18:05 and 18:12 entries and maps. Therefore, think of this timeline entry as **18:03 – 18:11** for now.

However, in a professional incident investigation two separate events would not be shown in a combined entry in the timeline. Since the map shows the Door 9 event, and dashcam video shows Sgt. Nicol opening the door at 18:13:23, the timestamp should rightfully be **18:13**.

For now, think of that entry as applying to both, or **18:03 & 18:13**. With that in mind, I will split this map into two separate maps to correct the problem.

The 18:06-18:11(12) Timeline Entry & Map

To create separate corrected maps for this timeline entry, I will use the evidence below as the basis. They are excerpts from articles based on radio communication transcripts (RC) and witness interviews (WI).

RC - “At 6:02 p.m., the same local sniper who first radioed in the message about the range finder **was on the second floor of the building owned by Agr International. From a northwest window, facing away from the rally site**, he glimpsed the suspect again just as Trump was preparing to take the podium. “All right, subject is in between the AGR building. He has a backpack,” said Sgt. Greg Nicol, a Beaver County sniper. Nicol had been assigned to look out over the rally site **from a window on the opposite side of the building, but he had moved to look for the suspect**, according to Young, Nicol’s commander.” (Source: [WP](#))

WI - “Nicol moved through the building trying to shadow Crooks, who was outside, and keep eyes on him. But Nicole lost sight of Crooks as Nicol **made his way down to the building's first level.**” (Source: [ABC](#))

WI - “Instinctively, Nicol left his second-floor post and **bounded down the stairs** in an attempt to keep eyes on the suspect who seemed to be “coming and going and disappearing.’

When **he pushed open the door**, the kid was nowhere to be seen. **Just then two police officers pulled up outside AGR** and Nicol shouted to them about where he’d last seen the suspect. The officers took off on foot in opposite directions around the sprawling AGR complex.” (Source: [CNN](#))

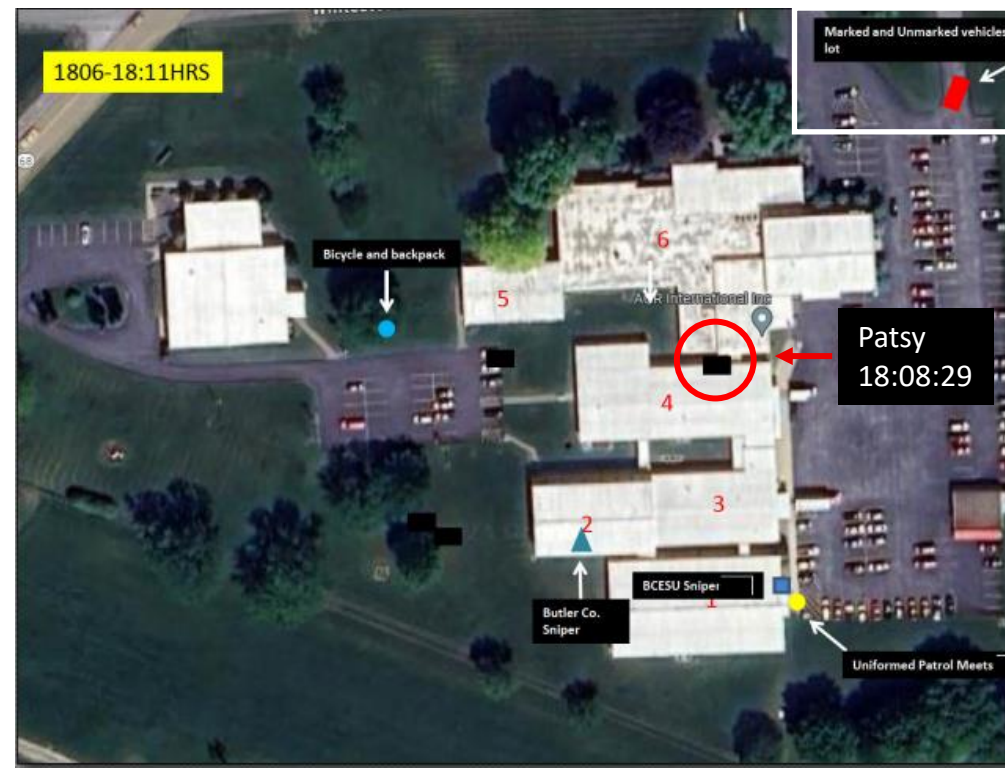
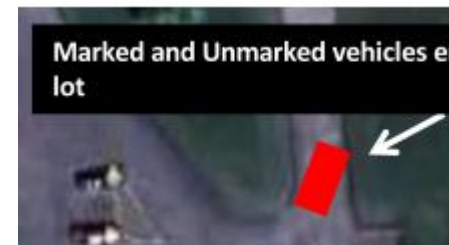
WI - “They went to different windows inside the building on the second floor and one of the ESU members observed him sitting on a picnic table outside of the building, holding a backpack,” said [BeC DA] Goldinger. “The officer saw this and Crooks went running. That’s when the officer ran downstairs, **left the building to try to locate him** because at this point, no one had responded to look into this suspicious person, and he wanted to keep eyes on him. He couldn’t locate him and then went inside the building and that’s when they heard the shots.” (Source: [WPX1](#))

The 18:06-18:11(12) Timeline Entry & Map

Now let's do a deep dive analysis of the uncorrected 18:06-18:11 map and the 18:06-18:12 entry. We'll take one item at a time, starting with the map.

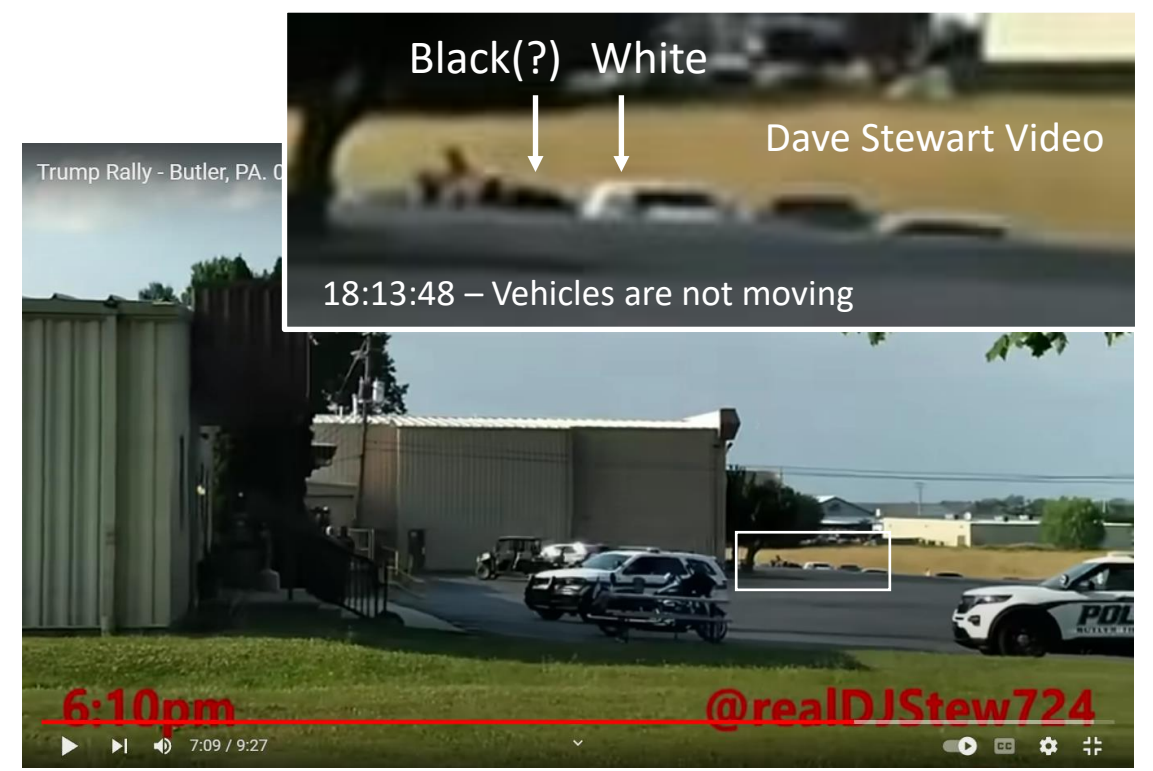
The map has added notations for where "Marked and Unmarked" law enforcement vehicles entered the lot. (The word "enter(ed)" is cut off after "en," so it is logically assumed to be "enter" or "entered.") The term "enter(ed)" does not necessarily mean "parked," though it doesn't rule out that's where they parked.

That said, we do see what appears to be a "Marked and Unmarked" vehicle parked in that location. The question is, when did they park there? Also, the redacted map has a redaction where the patsy was first spotted on the roof.



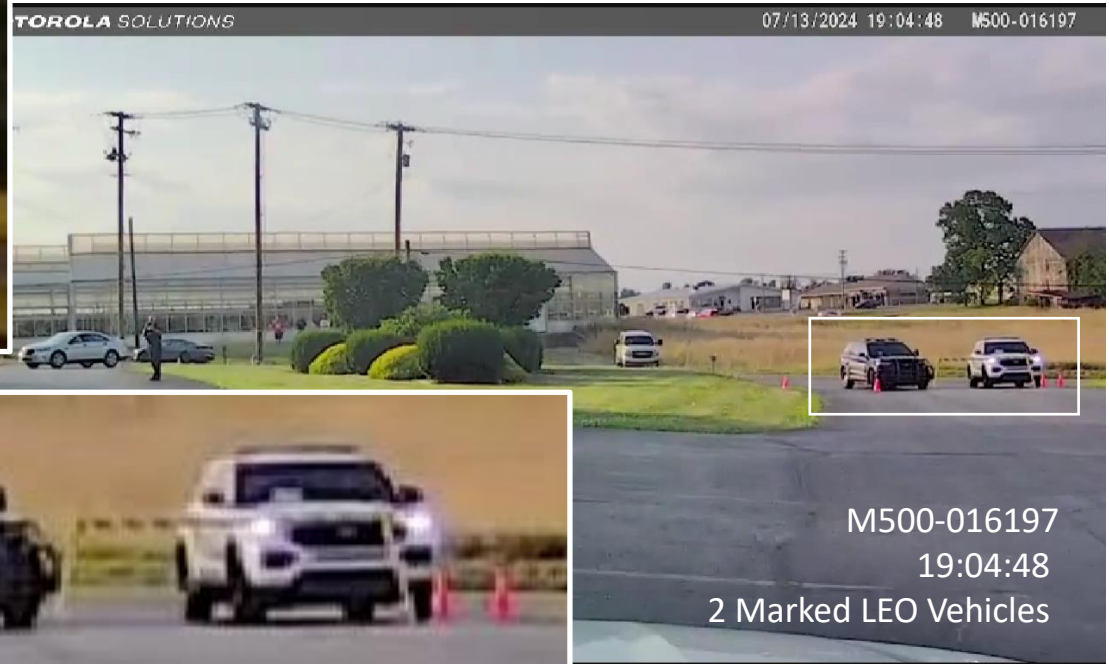
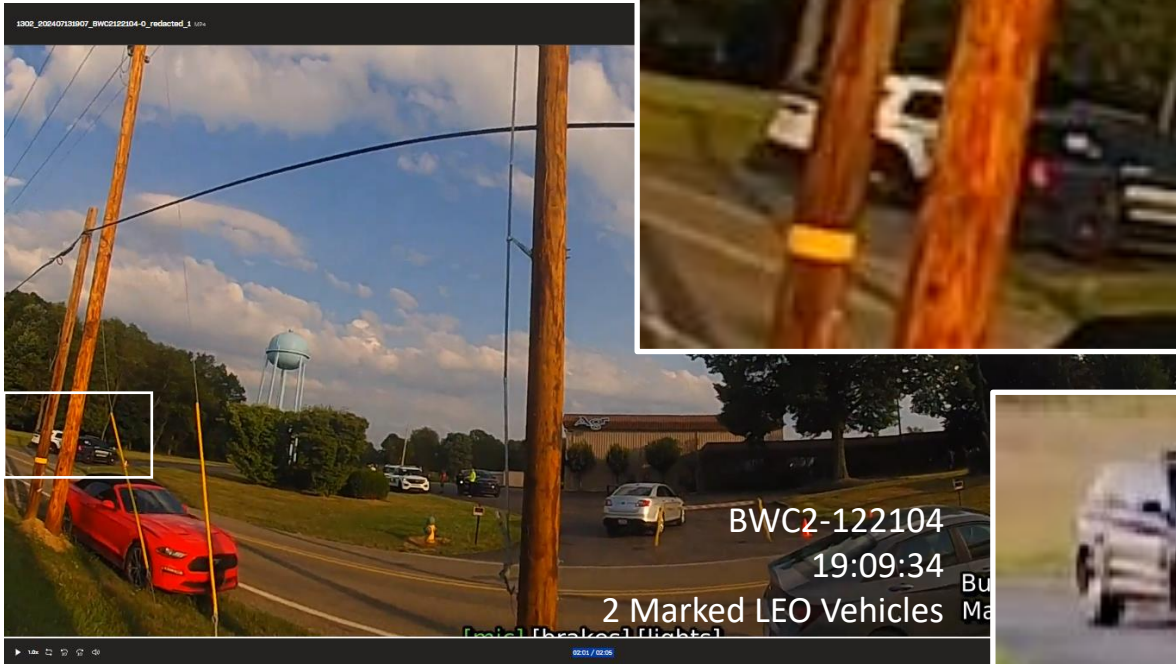
The 18:06-18:11(12) Timeline Entry & Map

We have two other videos that **might** show those two vehicles parked there earlier than 19:04:48. In BWC2-122111-1, they may have been seen as early as 18:10:53. In Dave Stewart’s cellphone video we might see those same vehicles parked in the same area at 18:13:48. The video quality is a little better and the vehicle colors are more discernable. If they are the two vehicles seen at 19:04:08, and they had been in that location around 18:03, it would support the Door 13 evidence: “Just then two police officers pulled up outside AGR.” If they had arrived there closer to 18:10:53 or 18:13:48, they may support the 18:13 Door 9 event. **I’ll further analyze these two vehicles later.**



The 18:06-18:11(12) Timeline Entry & Map

Upon closer examination, though, we see that those law enforcement vehicles are both marked. That is unless you consider side decals, roof flashers, and a bullbar (a.k.a. push bumper) unmarked. Later video evidence provided by new Peak Prosperity contributor @AdudeUknow (right) confirmed it. Even though the AAR clearly made an error, we shouldn't rule these vehicles out for the "1 Marked vehicle and unmarked vehicle pull in together" statement, not yet.



The 18:06-18:11(12) Timeline Entry & Map

Another explanation could be that the report writer got the location wrong on the timeline map. There were two law enforcement vehicles parked in the east lot across from Door 9, and they do include 1 marked vehicle and 1 unmarked vehicle. The question is, when did they arrive? In Dave Stewart’s 5:38 pm – 6:06 pm video, we first see them at ~17:47:14, which is approximately 16 minutes prior to the Door 13 event at ~6:03 pm. That would satisfy the “just pulled up” statement, if they did pull up then. It is possible, since Nicol radioed Butler County ESU command at ~17:32, and Sgt. Lenz called PSP Sgt. Olayer at 5:44 pm in the USSS security area, and Olayer in turn notified USSS. So, it’s possible those LEO’s had responded to that information. The only potential fly in that ointment is that it wasn’t until 5:54 pm that Sgt. Lenz notified Butler Township traffic control officers on PD Ops 3. At least one of those vehicles arrived well before that time, Murcko’s.

First seen at ~17:47:14 (17:38:00 + 0:09:14)



BeC
AAR

- 10:15 – Beaver Co ESU in place
- 10:30 – Vendor dispute at Main Entrance handled by Butler Co Sheriff Slupe
- 10:30 – Snipers in place

From My “Sidebar Analysis – Patsy’s Car”

The Jackson Twp. Vehicle is Mike Murcko’s since Woods texted “our cars” to Nicol and Murcko, and Nicol drove the SQ200. per the Butler County Detail Plan. Murko works for the Jackson Township Police department.



The 18:06-18:11(12) Timeline Entry & Map

Then we have more vehicles that pulled up between the uncorrected map times of **18:06** and **18:11**. As shown below, body and dash camera evidence shows 3 LEO vehicles “pull up” in the vicinity of Door 9 within 26 seconds of each other. (Note: All 3 cameras were 1 second behind actual time.) Here is what we see:

- 1. 18:09:00:** A Pennsylvania State Police (PSP) pulls in from the east, parks, and exits his vehicle.
- 2. 18:09:02:** A Butler Township officer (Det. Collins) pulls in from the east, parks, and exits his vehicle.

NOTE: Those 2 marked vehicles pulled up together, being within 2 seconds of each other, coming from the water tower where they were seen parked side by side momentarily at 18:08.

- 3. 18:09:26:** An unmarked law enforcement vehicle (David Tedeski) pulls in 24 and 26 seconds later from the north.

NOTE: One could hardly argue that this LEO pulled up together with either the PSP or Butler Township officer, due to the time difference and different direction. Furthermore, we do not see where that vehicle pulled in from exactly. Was it the wider drive at main entrance or the narrower one to the east?



Assuming an error by the report writer regarding the vehicles being 1 marked and 1 unmarked, or allowing for 24 or 26 seconds being “together,” we can confirm these vehicles as “just pulling up.”



The 18:06-18:11(12) Timeline Entry & Map

Let's see if radio communications and newly obtained video can help us identify arrival times for the vehicles we don't have times for.

The Adams Twp K-9 vehicle most likely belongs to 4827K Jason Giallorenzo and Kiko from Adams Twp. They were seen after the shooting walking down Whitestown road near these vehicles.

There are no radio calls to or from Giallorenzo (or Kiko 😊) around the Door 9 or 13 times, but we do hear from Giallorenzo later.



Peak Prosperity new contributor [@AdudeUknow](#) brought up radio communications from Giallorenzo heard at 18:35:18 and 18:38:42 in Detective Wittlinger's bodycam, [BWC2-122117](#), the later time being when he arrived at AGR.

[AdudeUknow](#) 2d

Also there are some things about the cars

The Black car on the right belongs to Giallorenzo & Kiko (4827K) and he didn't show up till at least 18:38:42.

4827K @ 18:35:18 "K9 7 minutes out, where do you want me to respond to"

4827K @ 18:38:42 "4827 K in the area. Where do you want me"

The 18:06-18:11(12) Timeline Entry & Map

Let's see if radio communications and newly obtained video can help us identify arrival times for the vehicles we don't have times for.

The Butler Township vehicle driver is unknown, but [@RedRanAmber](#) pointed out it is not the same as the one Kuss is seen driving, since they have different plate numbers. We also know where Kuss' vehicle was at 18:04:12.



Of the other Butler Twp patrol we've identified being at AGR, Det. Collins' and Officer Tedeski's vehicles have already been identified.. That leaves Det. Wittlinger, Sgt. Vensel, Sgt. Sasse, and Officer Blasko.



BWC2 – 122111-1
18:04:12
Officer Paul Kuss

The 18:06-18:11(12) Timeline Entry & Map

As [@AdudeUknow](#) pointed out, Wittlinger’s vehicle was the blue unmarked or personal vehicle parked at the NE AGR lot.



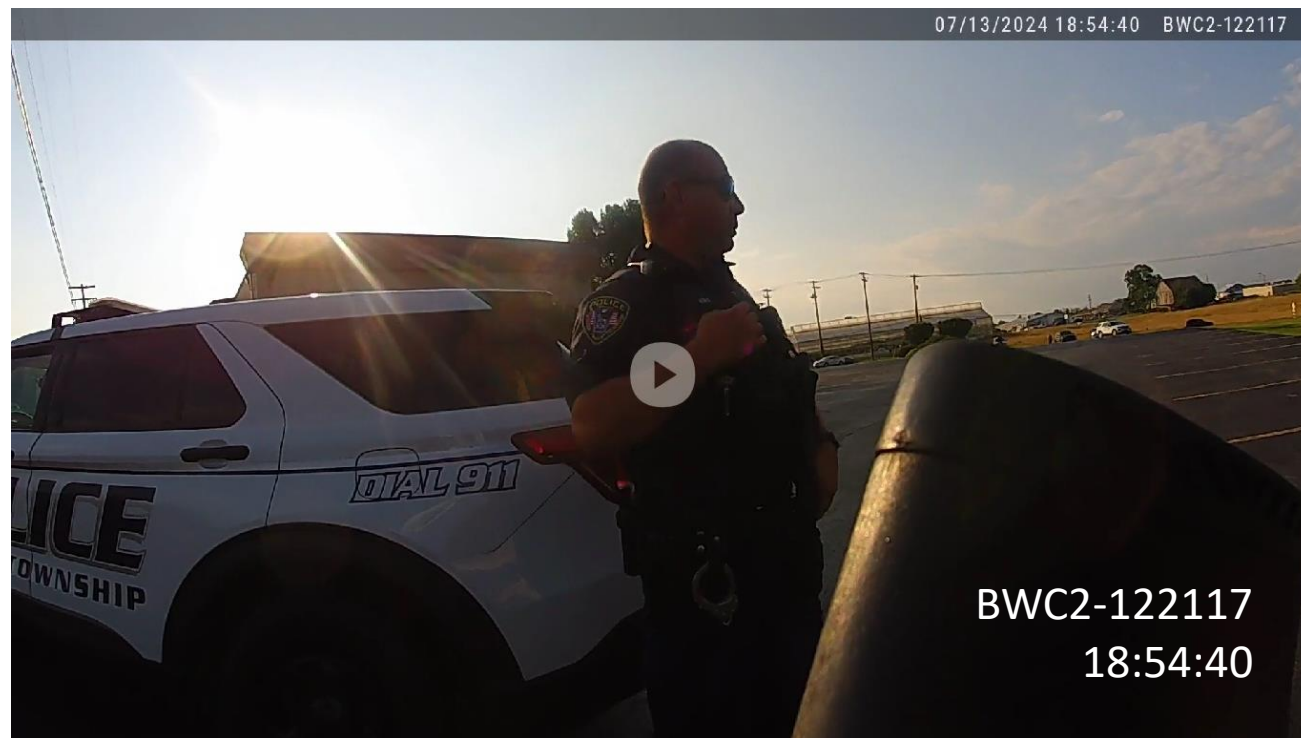
The blue car on the left belongs to Wittlinger (1383)

1383 @ 18:53:21 "I didn't realize where you were at. I came up here and didn't see anybody. I wasn't gonna just turn the corner not know what I was getting into ... I just creeped up by myself and saw you"

1383 @ 18:54:48 "Um, is that my car? It's right were that black car was parked"

In Wittlinger’s BWC2-122117 at 18:54:40 we hear him say, “Um, so my car, the blue one, it’s right where that black car was parked.”

Therefore, we are down to Sgt. Vensel, Sgt. Sasse, and Officer Blasko for this Butler Twp. vehicle.



BWC2-122117
18:54:40

The 18:06-18:11(12) Timeline Entry & Map

PTLM Blasko was asked during the 9/26/2024 Congressional Task Force Hearing to describe the few minutes leading up to the shots fired from his vantage point.

2:29:15 – “Officer Blasko same question”

2:29:25 – “At that time I was uh I was at Brady Paul and I was working my way over to the AGR building uh to assist other Butler Township units uh with looking for Cooks as I got to uh the Water Tower. I parked underneath the water tower um and began to make my way to AGR that's when the shots rang out.”

Det. Collins briefly meets up with Blasko near the water tower. Blasko later heads to AGR on foot. That leaves Sgt. Vensel and Sgt. Sasse, two officers and one vehicle.

[9/26/2024 – Cong. Task Force](#)



The 18:06-18:11(12) Timeline Entry & Map

From radio communications beginning with Sgt. Nicol’s 18:02:52 call to Sgt. Lenz about seeing the patsy between the AGR buildings heading towards Sheetz, we can infer who that the remaining Butler Township vehicle belonged to, Sgt. Vensel (1305) or Sgt. Sasse (1306). Both were at the AGR complex around the time of the Door 13 event at 18:03, and both were parked well before 18:13.

18:02:43	257	PD Ops 4	60701	Nicol	Alright subject is in between the AGR buildings he has a backpack now he just went towards sheetz
18:02:52	258	PD Ops 4	100501	Lenz	Copy, has a backpack now between the buildings heading towards sheetz
18:03:02	73	PD Ops 3	60295	Blasko	1305, 1305 or 1306 from 1345
18:03:11	74	PD Ops 3	60285	Vensel	Go ahead
18:03:15	75	PD Ops 3	60295	Blasko	Last seen between AGR building heading towards Sheetz, has a backpack
18:03:24	76	PD Ops 3	60285	Vensel	Okay
18:03:26	77	PD Ops 3	60292	Kuss	We have 2 officers, they him detained correct
18:03:33	78	PD Ops 3	60002	Lenz	Yes
18:03:37	79	PD Ops 3	60286	Sasse	1306 copies, I'm on foot over here by the entrance

18:05:16	80	PD Ops 3	60285	Vensel	45 I'm in the area on foot back here any updates
----------	----	----------	-------	--------	--

18:05:29	81	PD Ops 3	60295	Blasko	Not yet
18:06:06	82	PD Ops 3	60292	Kuss	1303 1340
18:06:15	83	PD Ops 3	60283	Murphy	1303
18:06:18	84	PD Ops 3	60292	Kuss	Can you keep eyes for that person, south on Meridian Rd I'm going into the woods behind the cruiser

18:06:27	85	PD Ops 3	60285	Vensel	He's reportedly between the buildings up here at AGR somewhere
18:06:44	86	PD Ops 3	60285	Vensel	I'm guessing the west side, east side looks clear
18:06:50	87	PD Ops 3	60286	Sasse	06 to 05, I'm walking up towards the west side

Sgt. Sasse – Arrived Before 18:03:37



Sgt Vensel – Arrived Before 18:05:16

Where did he park?



The 18:06-18:11(12) Timeline Entry & Map

Let's compare the evidence we have that might shed light on which pair of vehicles aligns with which event.



1. The black Adams Twp K-9 marked vehicle was not present until 18:38:42.
2. The blue unmarked vehicle was not present until after the Door 9 & 13 event, but likely entered there before 18:53.
3. The white marked Butler Twp vehicle arrived before 18:03:37
4. The white Butler Township marked vehicle most likely entered there.
5. Sgt. Sasse first walked to the west side at 18:06:50.

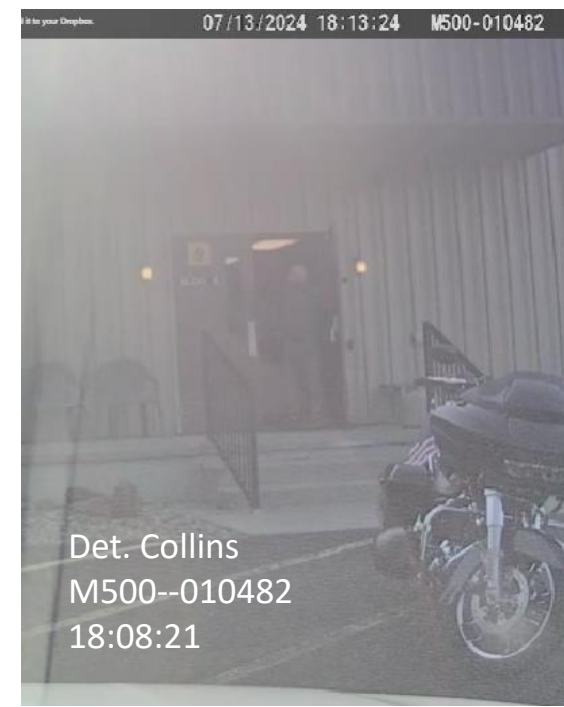
1. It is highly unlikely that the AAR would have included BuC SC Murcko's vehicle in that statement.
2. The unmarked vehicle could have pulled into the lot where the map stated, but that would be an assumption.

1. Two are marked and one is unmarked.
2. Only one could have pulled into the lot where the map stated, but that would be an assumption.
3. All three were sighted pulling in at ~18:09, so were not present before 18:03.
4. May have been interpreted by the writer or source of the information as "1 Marked vehicle and unmarked" that "pull in together,"

The 18:06-18:11(12) Timeline Entry & Map

The events that occurred at Door 9 began when Nicol opened the door at 18:13:23. The dashcam M500-010482 evidence does not support Nicol meeting “patrol to let them know suspect is around building on side of fairgrounds.” Neither of the 2 LEO’s that Nicol engaged at that time was Det. Collins, who “pulled up” to Door 9 in a marked vehicle. Therefore, the AAR 18:06-18:12 timeline entry only partially aligns with the actual Door 9 events, but also partially confirms it if interpreted accordingly. The report writer should have split that timeline entry into two separate entries, based on the evidence, such as those depicted below.

Note: In my newly revised “Timeline Analysis – Door 13 Event,” **I concluded that there were not two patrol outside of Door 13 when Nicol pushed open and exited the door, as reported by CNN.** Since that was not a direct quote from Nicol, it is likely the article’s author(s) conflated the Door 13 and Door 9 events.



• 18:03
– Nicol goes downstairs of building 2. He does not see the suspect.

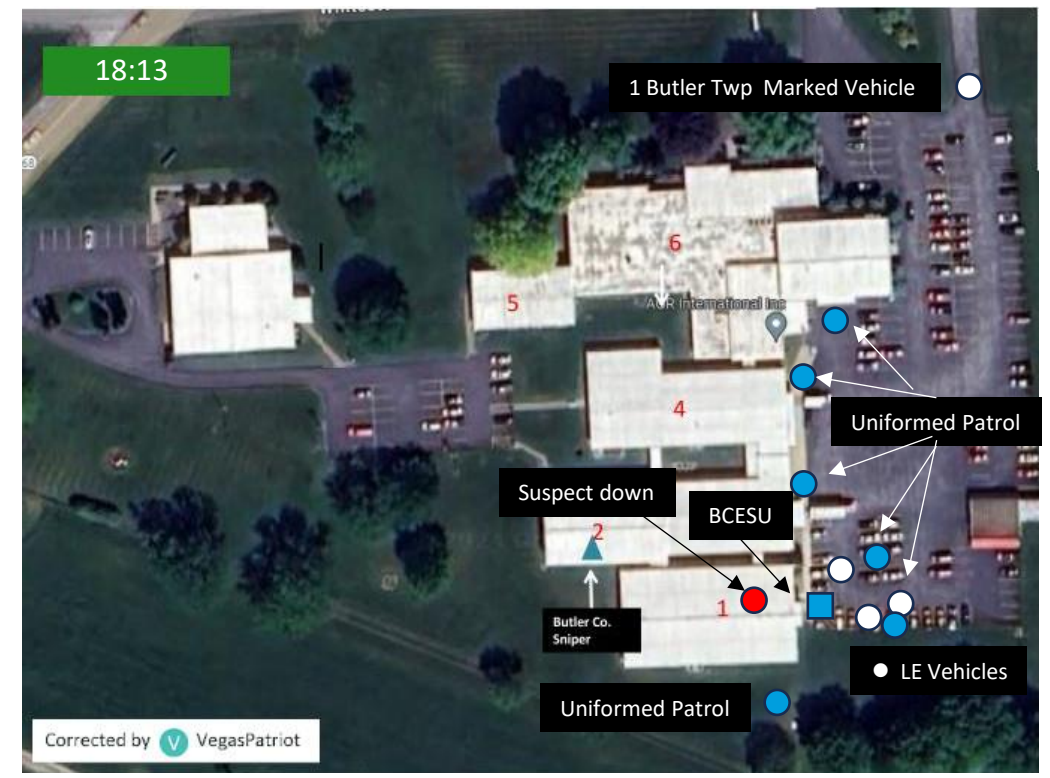
• 18:13
– Nicol goes to east end of building 1 to join other law enforcement officers who were trying to locate and apprehend the suspect.
• 2 Marked vehicles pull up together, followed by 1 unmarked vehicle

• 18:12 – Shots Fired, Shooter Down



The 18:06-18:11(12) Timeline Entry & Map

Having split the timeline entries, it makes sense to split the associated map based on the evidence provided above. Given the sighting times for the Butler Township vehicles above, it is inferred that they were in fact present at 18:03, though only two of them were located within the map’s boundaries. In the 18:03 map only the Butler Township vehicles are shown, whereas in the 18:13 map one PSP vehicle is also shown due to having “just pulled up.” Since the exact location of the Butler Township patrol officers at 18:03 is not known, they are not depicted on the map. In the 18:13 map, any ESU member locations are not depicted.



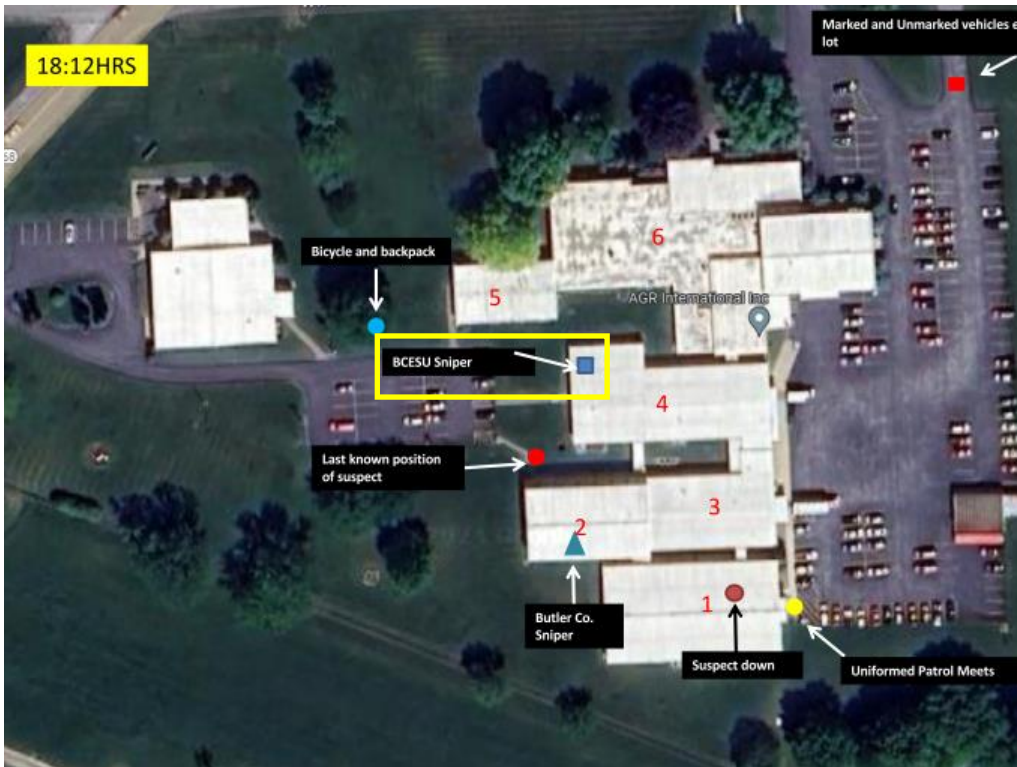
The 18:12 Timeline Entry & Map

The last timeline entry and map we need to analyze is for 18:12. One glaring issue is the location of Sgt. Nicol in the northwest corner of AAR Building 4. It is possible that was the right corner, wrong building, and wrong time. It is also possible that was part of the 18:06-18:11 period of time, and the location is correct. After the Door 13 event Sgt. Nicol may have gone to that location hoping to spot the patsy, though it would be more logical to continue to go between the buildings outdoor. Those possibilities are addressed in my “Timeline Analysis – Doors 9 & 13 Events.” Since we do not know Sgt. Nicol’s location at that time it is not depicted on my corrected map.

Note: Since all 10 shots were fired during the second half of minute 18:11, it makes sense to round that up to 18:12 rather than round it down to 18:11.

AAR Timeline Entry

- 18:12 – Shots Fired, Shooter Down



Shot 1 - 18:11:33
Shot 10 - 18:11:48



Understanding The Inaccuracies

Conclusions

As stated in the beginning, when reviewing the AAR inaccuracies, consider how Sen. Grassley’s website containing that document introduces it. It was “**a flash summary**,” and that may partly explain the many inaccuracies. Regardless of the reason(s), it represents a piece of evidence in an investigation, and evidence needs to be examined prior to relying on it for investigative purposes. It is a classic example of why evidence must first be examined to verify its validity before relying on for or using it as supporting evidence.

Validity (*Being well-grounded, sound, or correct.*)

1. **Authenticity** (*Being genuine, real, or what is claimed.*) - Evidence must first be verified too be in its original form, or proven to be an unmodified copy, redactions notwithstanding. If something is fabricated, forged, photoshopped, or otherwise modified, it should not be considered valid. Also, consider the source!
2. **Veracity** (*Being accurate, factual, or truthful.*) – Evidence must be examined for accuracy. If the evidence conflicts with itself, or is contradicted by other evidence, that needs to be taken into consideration when utilizing that evidence for investigative purposes.
3. **Consistency** (*Being in agreement or harmony with itself and other valid evidence.*) – Evidence must be consistent within itself and be in agreement with other valid evidence. It must align with the overall sequence of events. Otherwise, it has to be considered inaccurate for investigative purposes and utilized only with those inconsistencies in mind.

The AAR is authentic based on the source and the agreement between redacted and unredacted versions. It scores low on the veracity test due to the timeline maps having so many errors, along with the 18:06-18:12 timeline entry. The same holds true regarding the maps not being consistent with itself, other valid evidence, and the sequence of events. The validity of remaining portions is good, and the overall validity would significantly improve if the timeline maps were corrected as I have shown, along with the 18:06-18:12 timeline entry. Using the timeline maps in their original state as supporting evidence is investigative negligence.